

AEG PARTITIONS

COMPANY BROCHURE



CONTACT US

www.aegpartitions.com
sales@aegpartitions.com

CONTENTS



ABOUT US



AEG Partitions has more than 20 years experience in the field of partition walls. It is a technological innovation enterprise that integrates research, development, design, production, maintenance and sales of vertical partition walls.

AEG is committed to R & D and production of high quality vertical folding partition walls. The accessories are selected from well-known brand, such as electric machinery from NORD, Safety Motors from Wright, PLC from Siemens, etc.

We firmly believe that providing high quality products and professional service can better solve the needs of clients.

Because we persist in providing high-quality products and professional services, the projects we done have won recognition from our clients.



System Certification



Fire performance

Passed 1.57 hours Fire
Resistance Limit Test



Stable and Reliable

With many years of normal
use cases



Eco-friendly

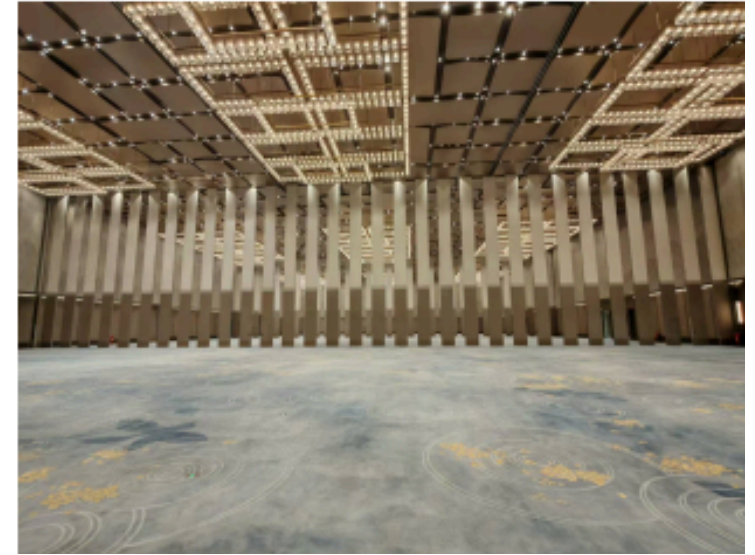
Recycling reusable

Acoustic performance

Soundproofing up to $R_w=62\text{dB}$

PRODUCT INFORMATION

**MOVABLE WALL -
MANUAL MOVABLE WALL,
SEMI-AUTOMATIC
MOVABLE WALL**



**VERTICAL FOLDING
RETRACTABLE WALL**



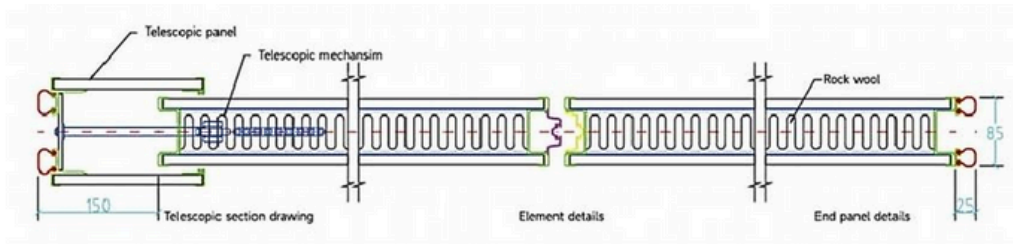
MOVABLE WALL PARTITION

MOVABLE WALL PARTITIONS ARE A WALL SYSTEM THAT DIVIDES SPACES INTO VARIOUS AREAS. IT CAN BE OPENED BY FOLDING ITS MODULES. CREATES A COMPLETELY FIXED WALL WHEN CLOSED. CAN BE EASILY MOVED AND OPENED, AND CAN BE STORED BY CREATING PARKING AREAS IN A VARIETY OF WAYS. MANUAL MOVABLE WALLS ARE SYSTEMS THAT ARE MOVED BY MANUALLY PUSHING AND PULLING. THE LOWER AND UPPER GUILLOTINES ARE MANUALLY CONTROLLED.

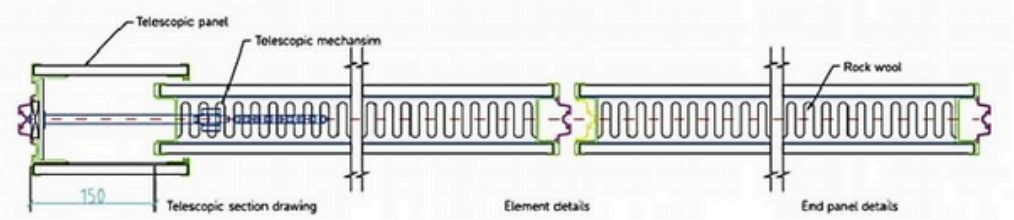
SEMI-AUTOMATIC MOVABLE PARTITION WALLS ARE SYSTEMS IN WHICH THE SLIDING MOVEMENT OF THE PANELS ON THE RAIL IS DONE MANUALLY, BUT THE LOWER AND UPPER SOUND INSULATION GUILLOTINES ARE PROVIDED AUTOMATICALLY BY THE MOTORS INSIDE THE PANEL.

STRUCTURE OF MOVABLE WALL

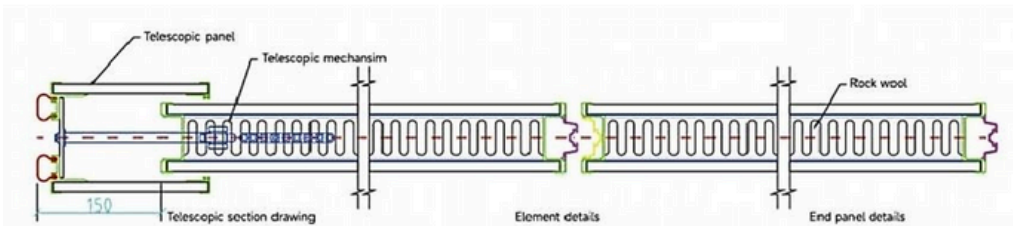
TYPE 85 THE CONNECTION DETAILS OF PANELS



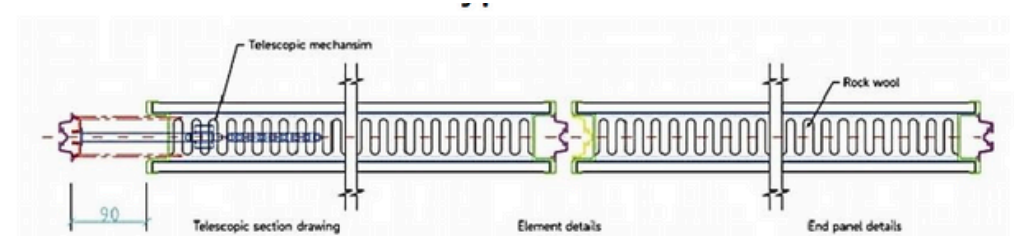
TYPE 85-1



TYPE 85-3



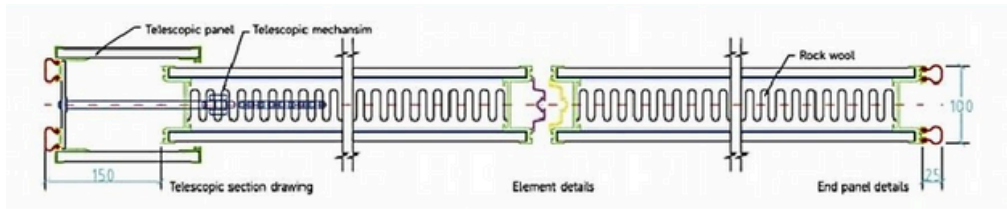
TYPE 85-2



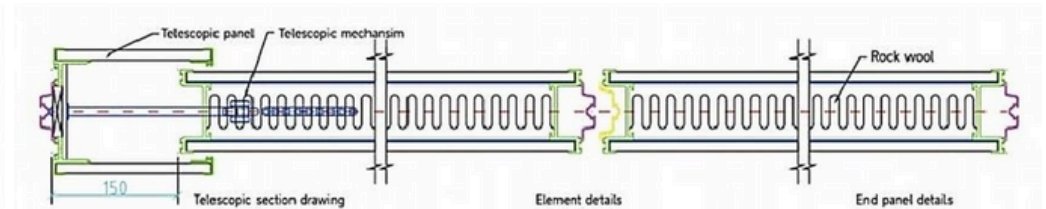
TYPE 85-4

STRUCTURE OF MOVABLE WALL

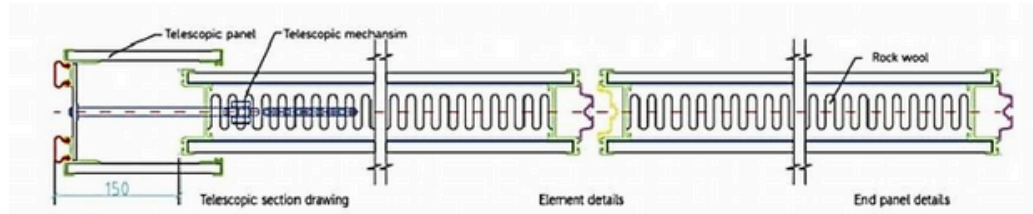
TYPE 100 THE CONNECTION DETAILS OF PANELS



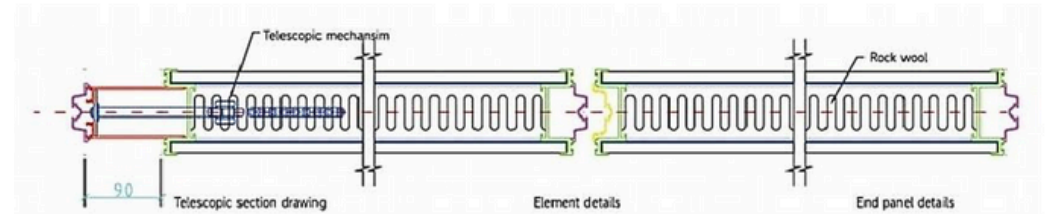
TYPE 100-1



TYPE 100-3

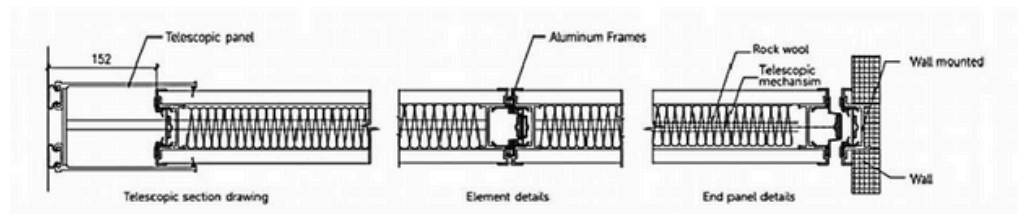


TYPE 100-2



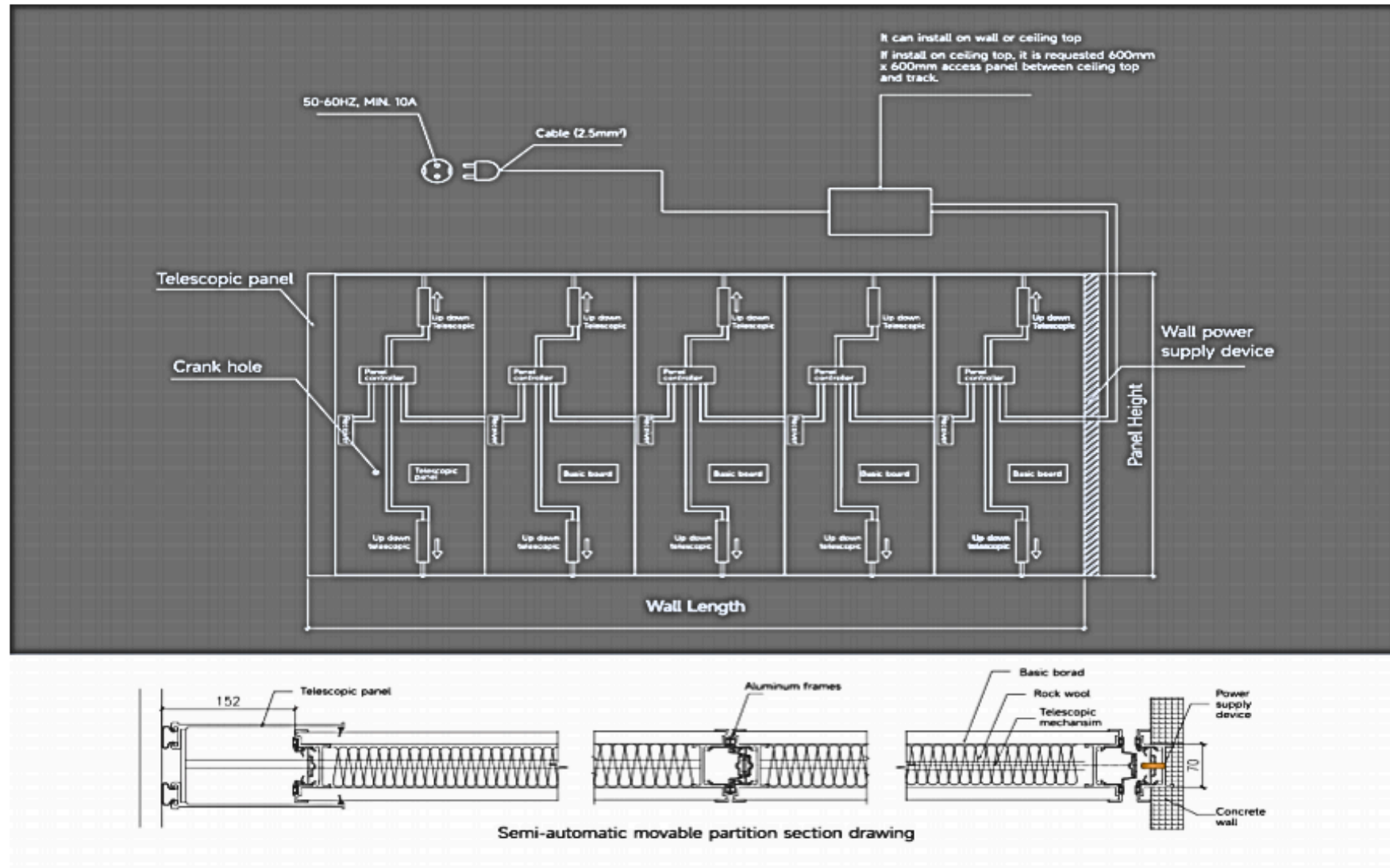
TYPE 100-4

TYPE 105 THE CONNECTION DETAILS OF PANELS



SEMI AUTOMATIC MOVABLE WALL SYSTEM

THE CONNECTION DETAILS OF PANELS

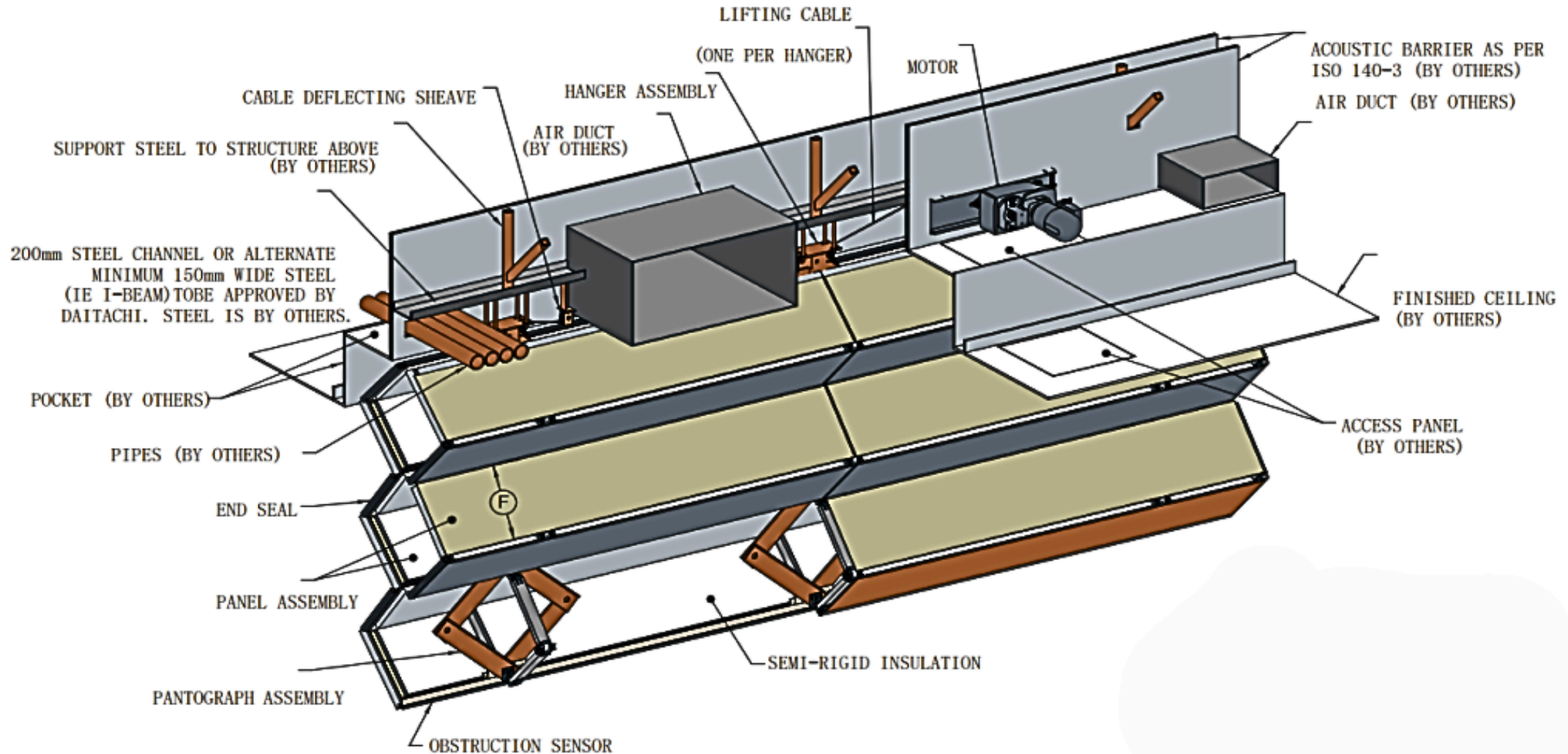


VERTICAL FOLDING WALL SYSTEM

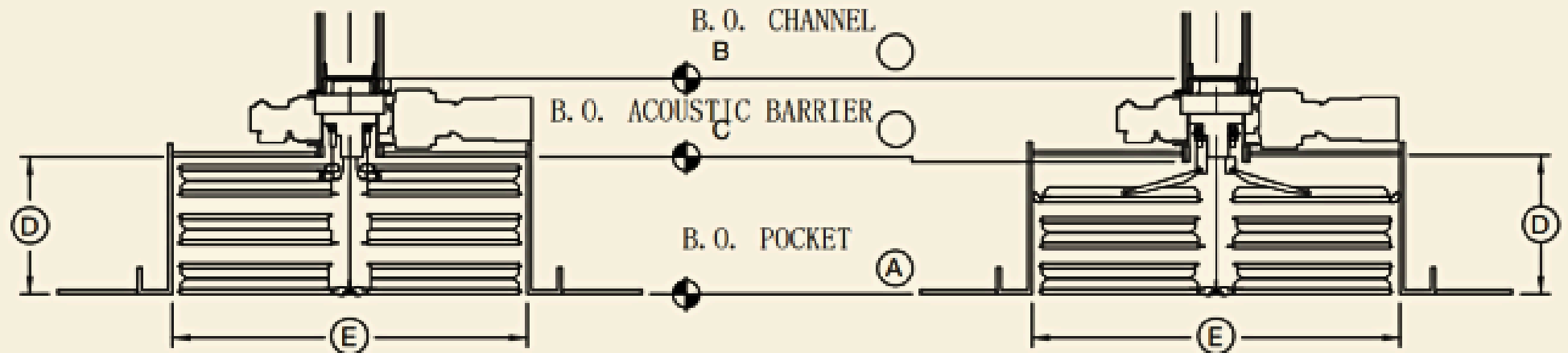
PARAMETER

TECHNICAL (METRIC)				
	Model 51	Model 55	Model 62	Model NRC
RW (System)	51	54	62	49
SAC (System)	-	-	-	up to 0.65
Max Height (mm)	11,000	11,000	8,540	11,000
Max Length (mm)	unlimited	unlimited	unlimited	unlimited
Weight (kg/m2)	36.5	39.5	48.2	38.3
Available Finishes	Various*	Various*	Various*	Fabric only
Ceiling space required for storage(mm)-(approx.)	495 to 1,850	495 to 1,850	495 to 1,460	495 to 1,850
Pock width (mm)-(approx.)	1,386 to 1,750	1,386 to 1,750	1,386 to 1,750	1,386 to 1,750
ADDITIONAL FEATURES				
Auto-reverse	Y	Y	Y	Y
Floor track	N	N	N	N
Wall tracks	N	N	N	N
Obstruction safety sensor	Y	Y	Y	Y
Back-up operation	Y	Y	Y	Y
AVAILABLE OPTIONS				
Touch screen	Y	Y	Y	Y
LED	Y	Y	Y	Y

PRODUCT DESCRIPTION

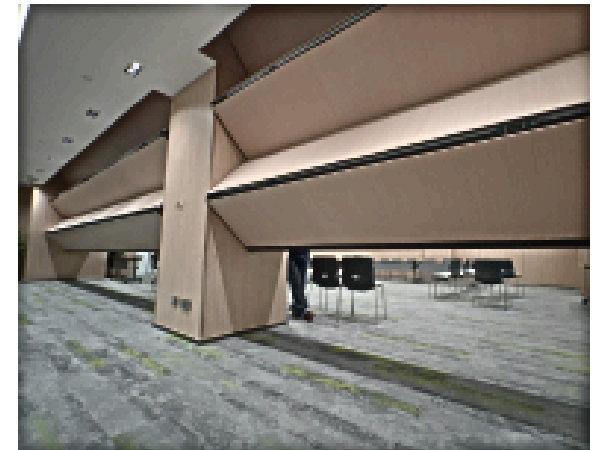
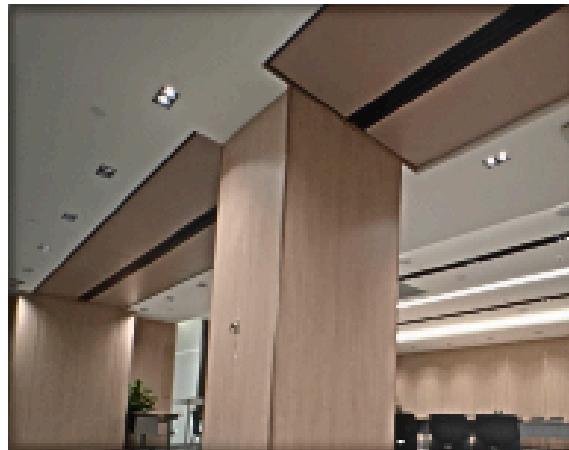
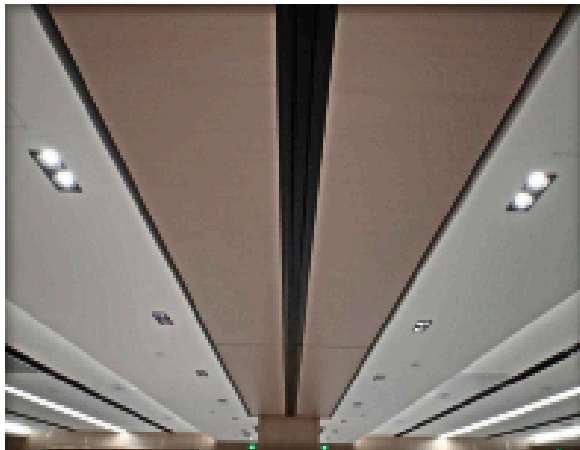


PRODUCT DESCRIPTION

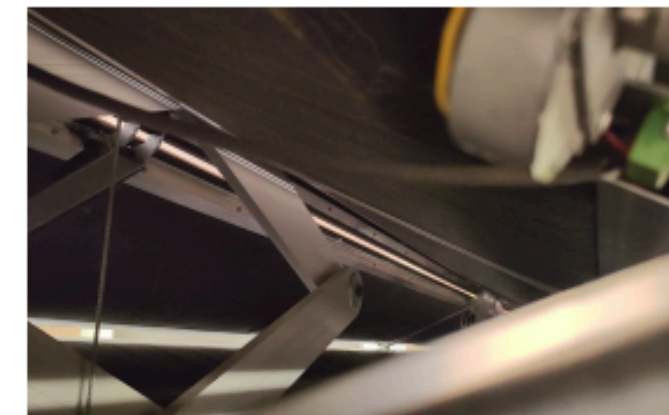
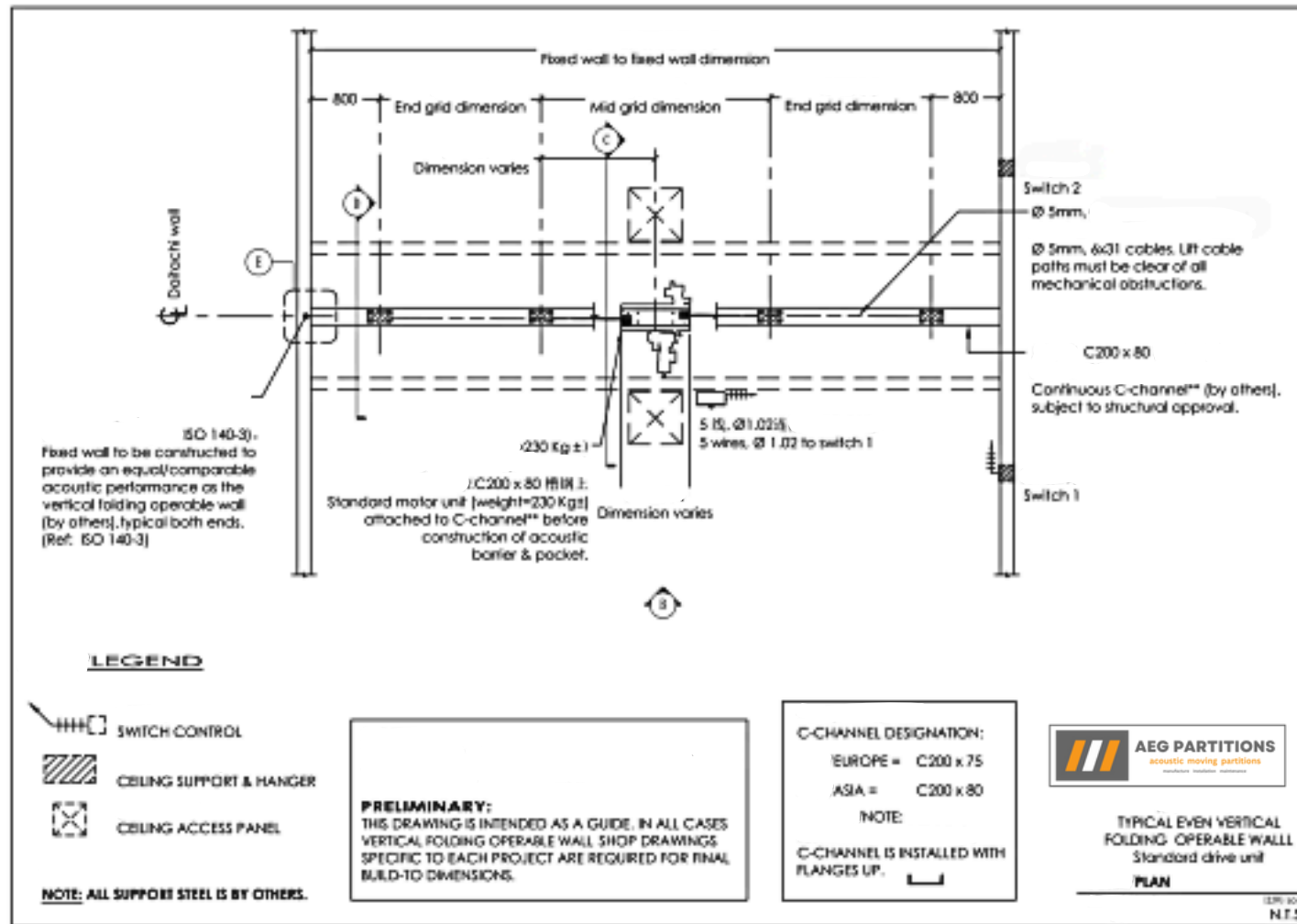


EVEN SCENARIO

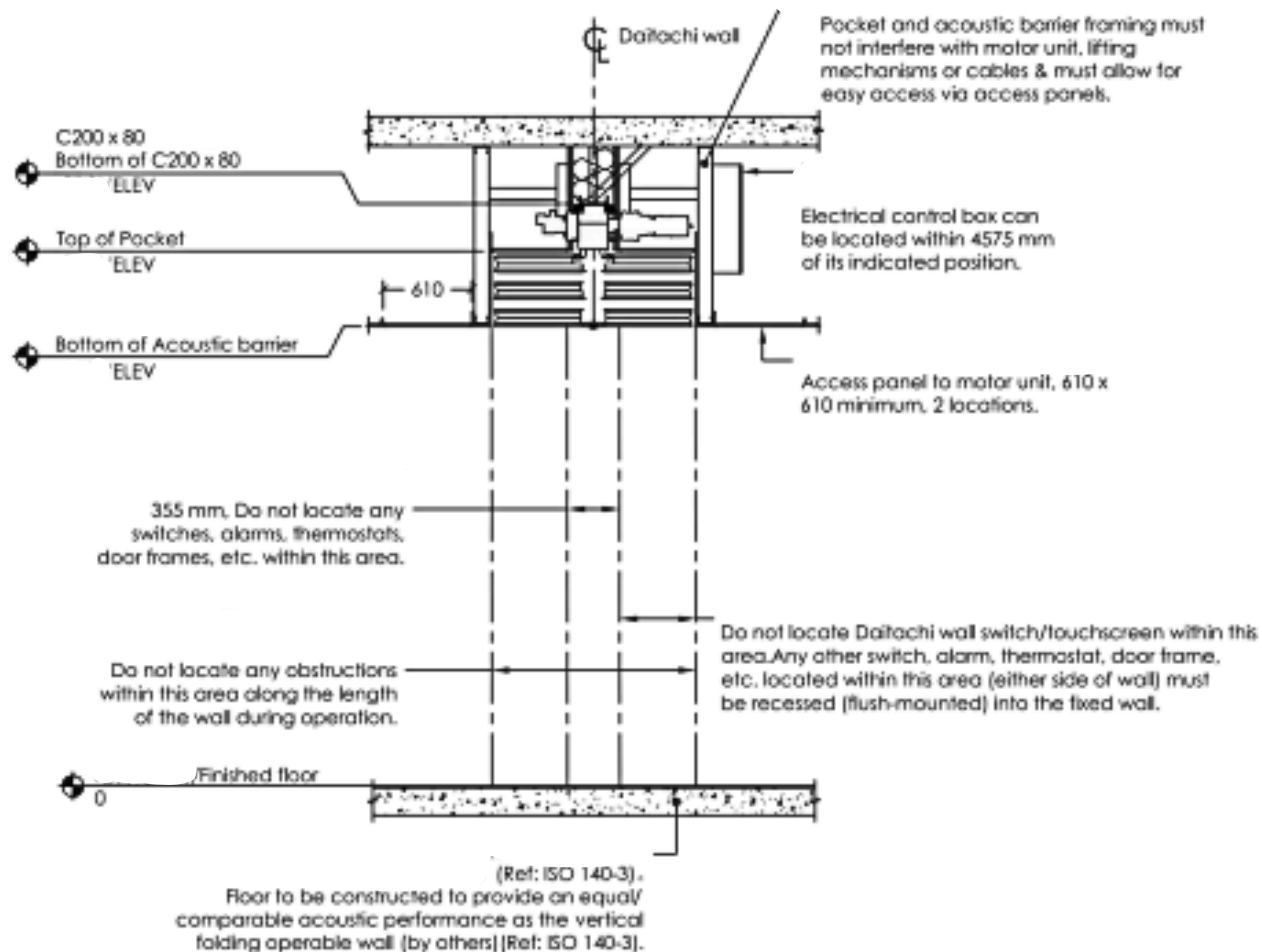
ODD SCENARIO



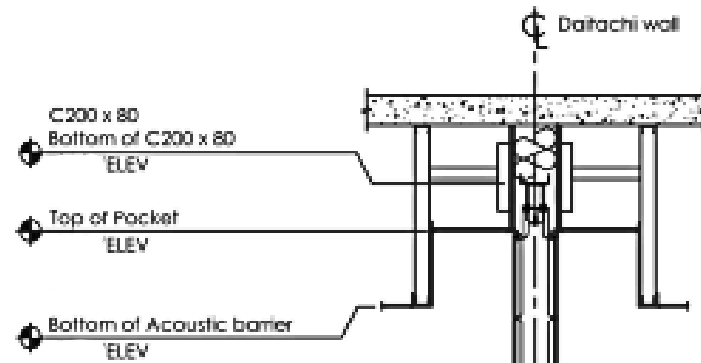
PRODUCT DESCRIPTION



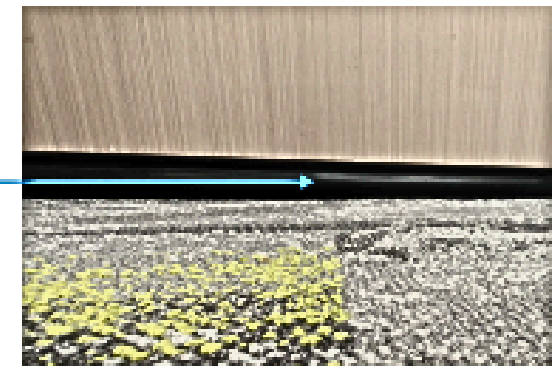
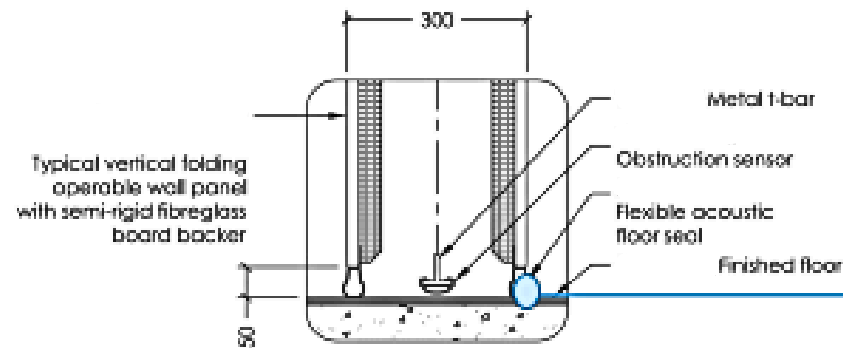
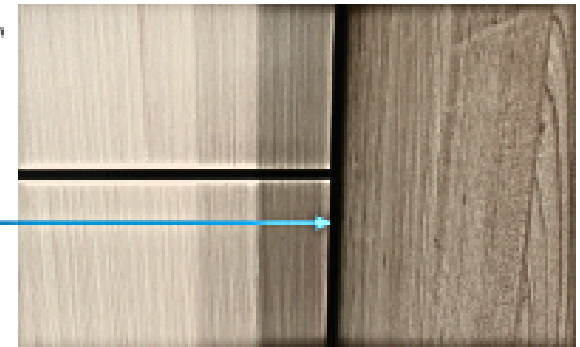
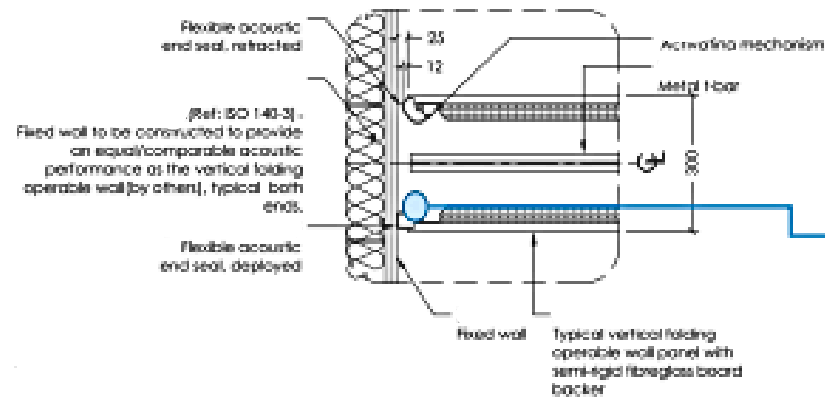
PRODUCT DESCRIPTION



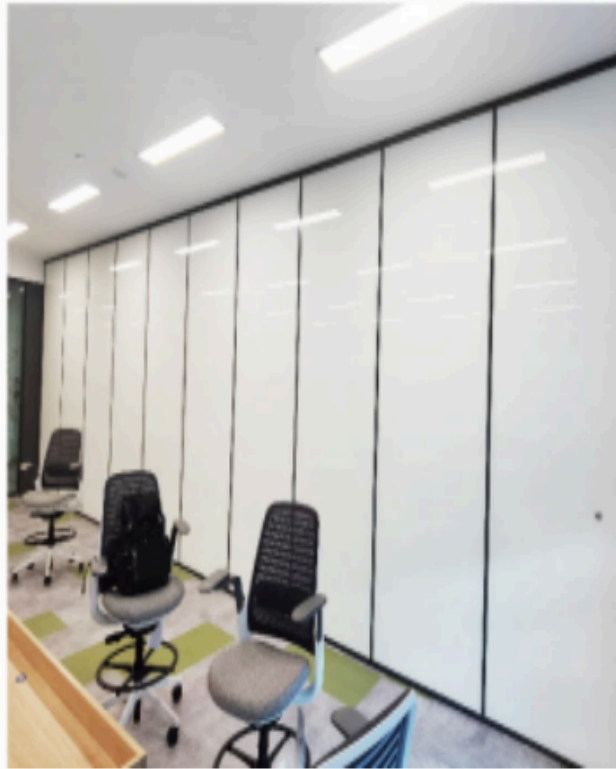
PRODUCT DESCRIPTION



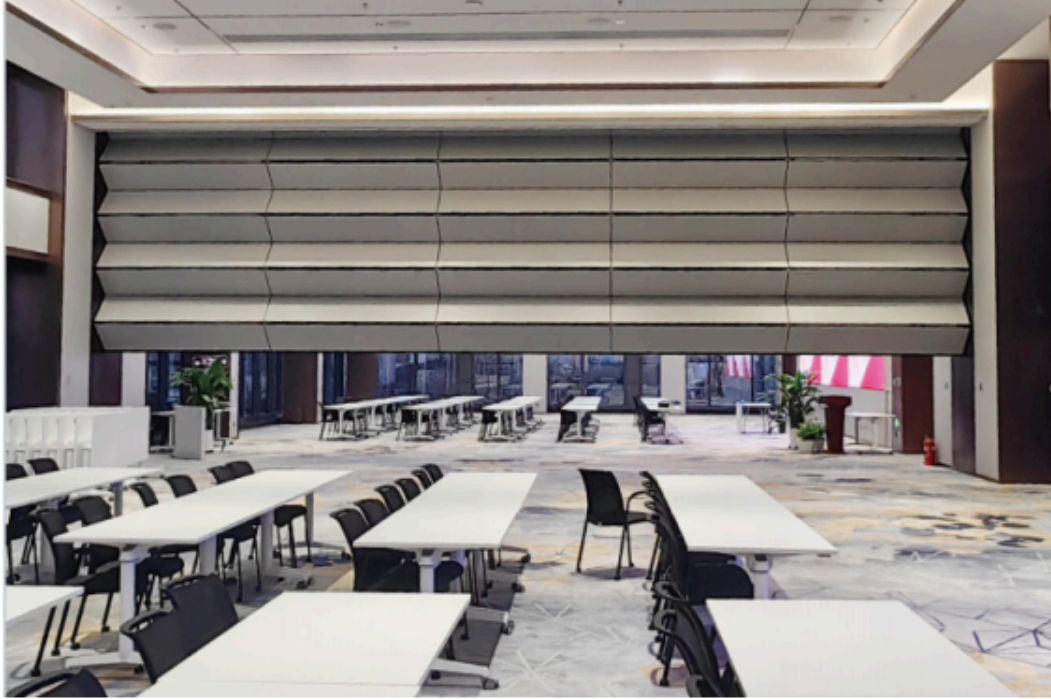
(Ref: ISO 140-3).
Floor to be constructed to provide an equal/comparable acoustic performance as the vertical folding operable wall (by others) (Ref: ISO 140-3).



PROJECT EXPERIENCE



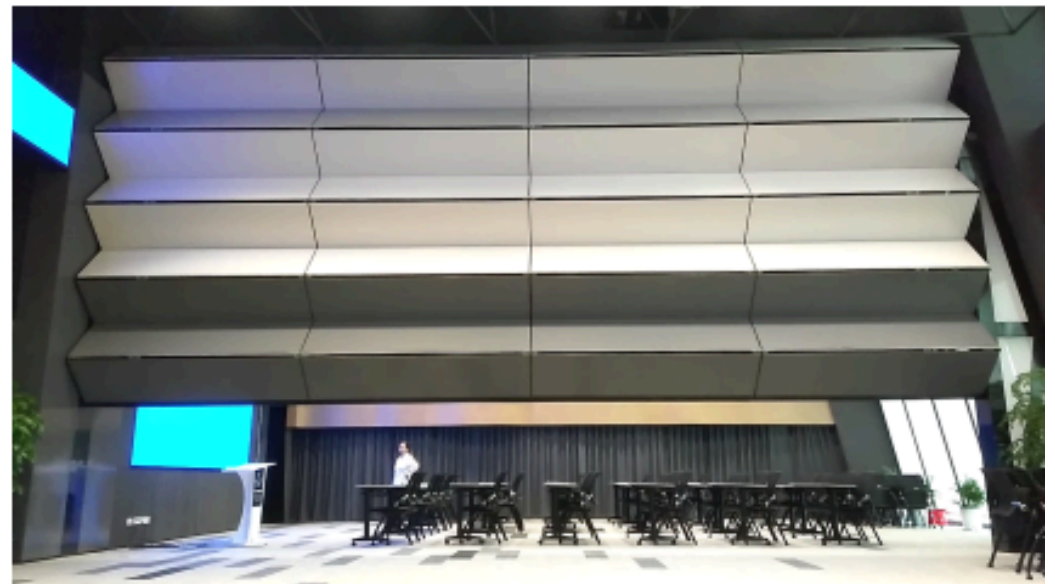
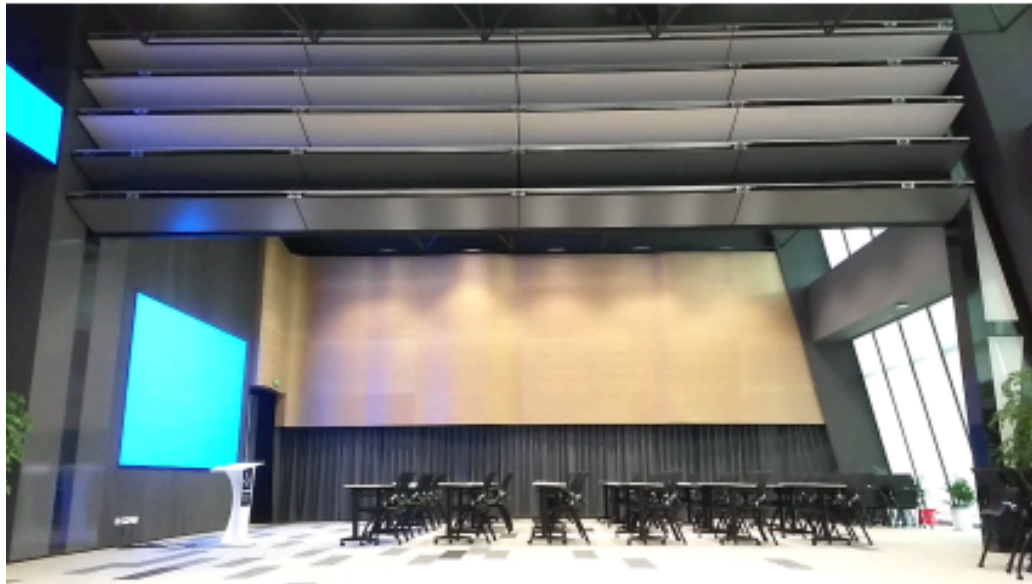
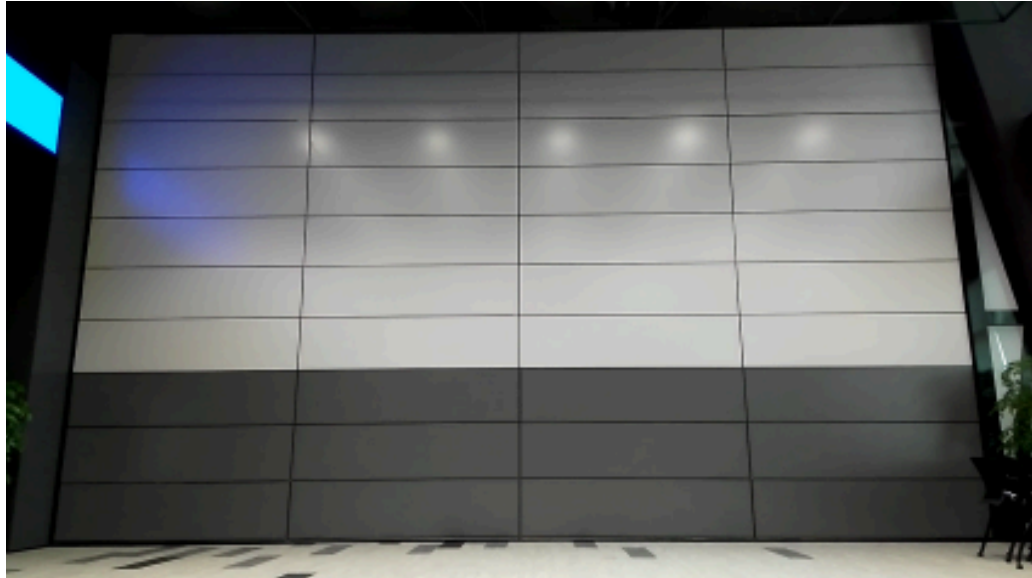
PROJECT EXPERIENCE



PROJECT EXPERIENCE



PROJECT EXPERIENCE



PROJECT EXPERIENCE



PROJECT EXPERIENCE

